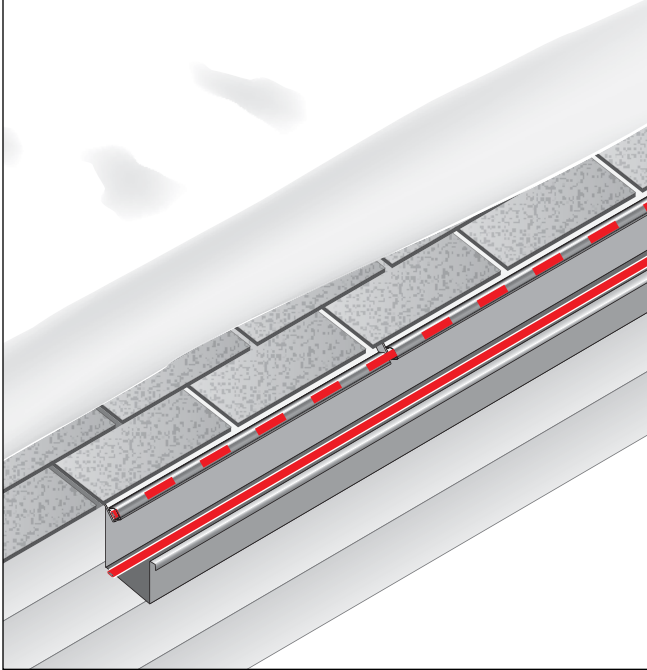




Edge-Cutter® Roof De-icing System

Installation Recommendations



Description

Edge-Cutter has many application variables so these recommendations are offered as a guide only.

Edge-Cutter® is an aluminum flashing designed to be used as a heat conductive plate to aid in keeping snow and ice from roof edges. The system is for use only with self-regulating heating cables certified for use in roof and gutter applications. The system can also be used with hydronic heated fluid systems.

Final installation, design and use of this product is at the sole discretion of user and Heat-Line does not warrant its performance in any manner.

Edge-Cutter is designed to be applied between the roofing and the roof substrate. It can be used with various roofing products such as asphalt shingles, aluminum, steel* and even slate.

Edge-Cutter can be fastened using various methods including screws or adhesives depending on application and building materials.

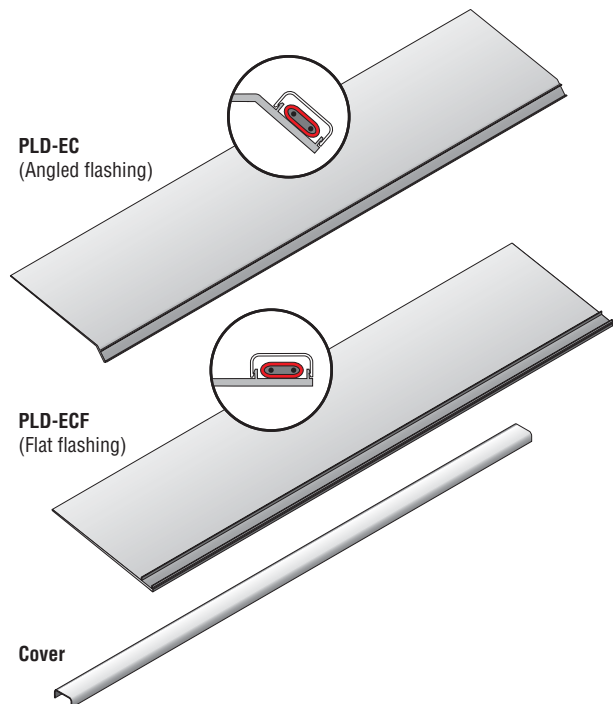
The designer or installer should contact local building authorities and related authorities such as the electrical inspection department for final inspection approval.

For technical support call Heat-Line a division of Christopher MacLean Ltd. at (800) 584-4944.

*Edge-Cutter can be ordered with a 6 mil urethane membrane applied to help prevent galvanic oxidation or corrosion when in contact with dissimilar metals.

Kit Contents

Qty	Description
1	4 ft. section of Edge-Cutter flashing (angled or flat)
1	4 ft. section of Cover



⚠ WARNING:

FIRE and SHOCK HAZARD

- Do not use this product with constant wattage heating cable.

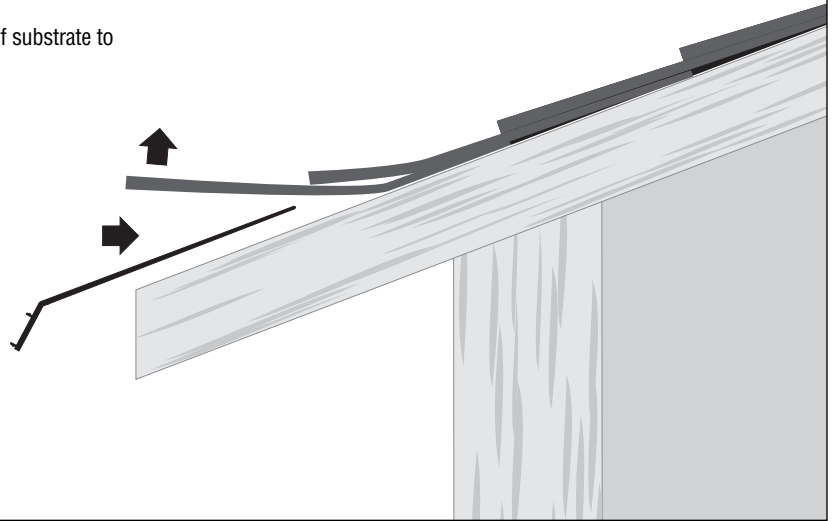
- The use of this product and its compatibility with various heating cable supplier is at the sole discretion of the system designer or installer.
- Any material that has been cut must be deburred so there are no sharp edges.
- Contact heating cable manufacturers for compatibility approval (for roof and gutter applications).
- Any heating cables used must be CSA and UL Certified.
- Follow heating cable manufacturer's instructions for installation of roof and gutter de-icing systems.
- When using heating cables other than Heat-Line's follow that manufacturer's installation instructions.

Edge-Cutter Installation Recommendations

1

IMPORTANT: Edge-Cutter flashing can be cut to suit your specific situation. After cutting, Edge-Cutter flashing and covers must be deburred so no sharp edges remain.

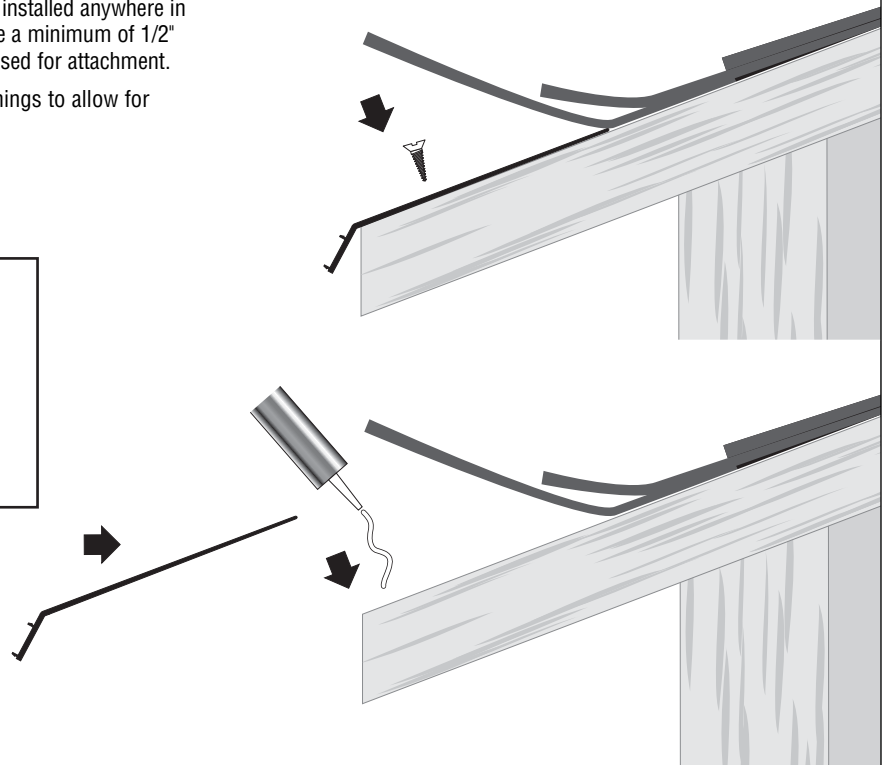
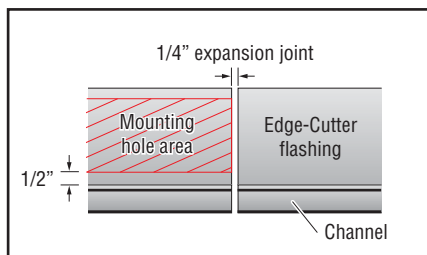
- Carefully peel back roofing material, exposing the roof substrate to accommodate Edge-Cutter.



2

- Using screws or flexible adhesives, attach the Edge-Cutter flashing to the roof substrate. Mounting holes may be installed anywhere in the hatched area in the illustration below. Note a minimum of 1/2" from the bend in the aluminum must not be used for attachment.

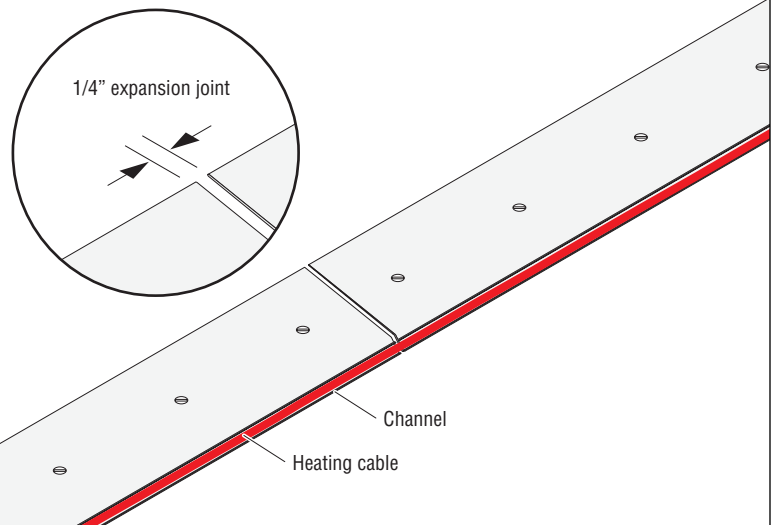
IMPORTANT: Allow 1/4" spacing between flashings to allow for expansion and contraction of the aluminum.



Edge-Cutter Installation Recommendations

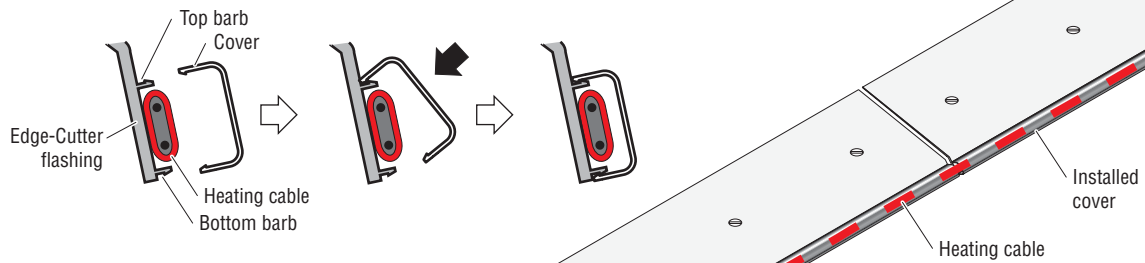
3

- Lay heating cable in the channel.

**4**

Installing the cover assembly

- Make sure there is no debris in the barbed areas. Use a brush or toothbrush to remove any debris. (Even the smallest stone or grain of sand must be removed as it is a very fine barb.)
- Position the cover by fitting the top barb first.
- Snap the cover down onto the bottom barb. Offset pump pliers work nicely to complete the cover installation. You can protect the cover from damage by taping the teeth on the pump plier.



Edge-Cutter Installation Recommendations

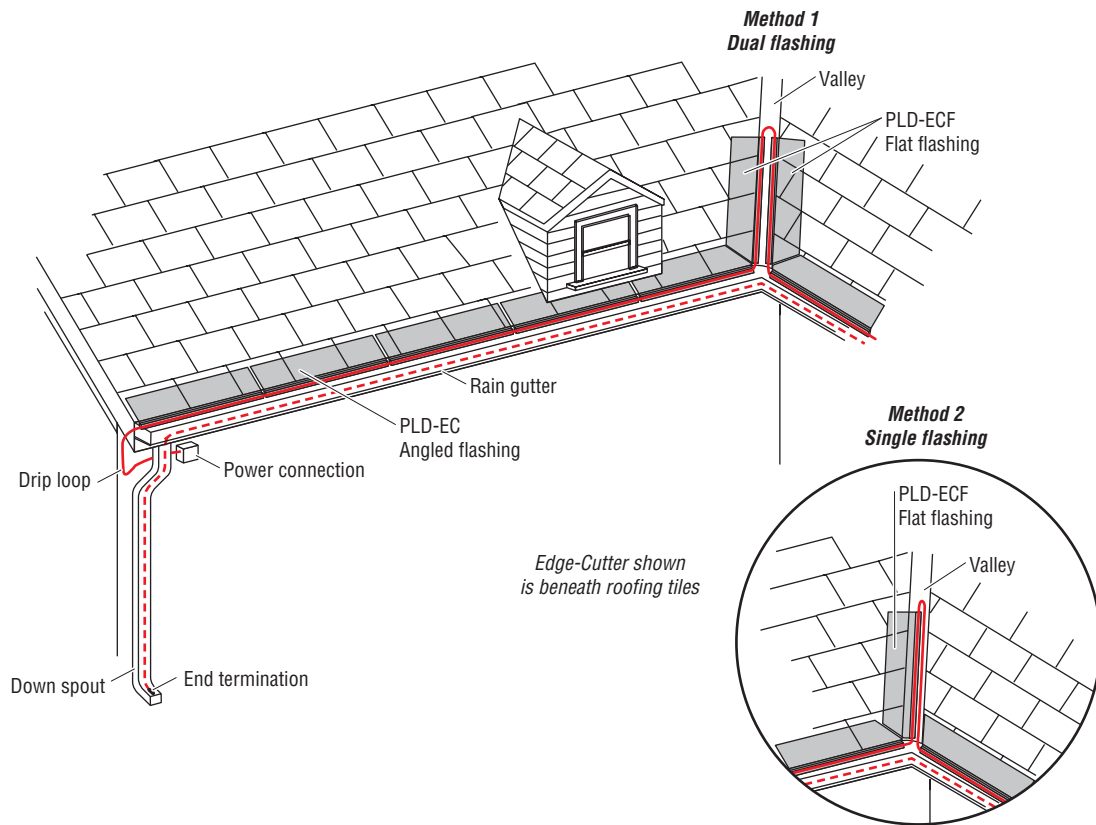
5

- Valleys can also be heat traced using Edge-Cutter PLD-ECF (flat flashing). Use one of the two methods recommended below.

Method 1: Use flashing with the channel on both edges of the valley. Run heating cable up one side and loop it at the top, then down the other side.

Method 2: Use a single run of flashing with the channel lined up in the middle of the valley. Run the heating cable up the channel of the flashing, then terminate it, or run it back down inside the valley to continue in other Edge-Cutter flashing.

- Connect the heating cable to a power source using a drip loop.
- Complete the installation by looping the cable back through the rain gutter and terminate the heating cable at the bottom of the down spout using an appropriate end.



Heat-Line® and Edge-Cutter® are registered trademarks of Heat-Line Corporation.
USA Patent # 6,852,951

Heat-Line
A division of Christopher MacLean Ltd.
 1095 Green Lake Road
 Carnarvon, ON
 Canada K0M 1J0
 Tel: (705) 754-4545
 (800) 584-4944
 Fax: (705) 754-4567
 info@heatline.com
 www.heatline.com

Important: All information, including illustrations, is believed to be reliable. Users, however, should independently evaluate the suitability of each product for their particular application. Heat-Line a division of Christopher MacLean Ltd. makes no warranties as to the accuracy or completeness of the information, and disclaims any liability regarding its use. Heat-Line a division of Christopher MacLean Ltd. only obligations are those in the Heat-Line a division of Christopher MacLean Ltd. Standard Terms and Conditions of Sale for this product, and in no case will Heat-Line a division of Christopher MacLean Ltd. be liable for any incidental, indirect, or consequential damages arising from the sale, resale, use, or misuse of the product. Specifications are subject to change without notice. In addition, Heat-Line a division of Christopher MacLean Ltd. reserves the right to make changes—without notification to Buyer—to processing or materials that do not affect compliance with any applicable specification.